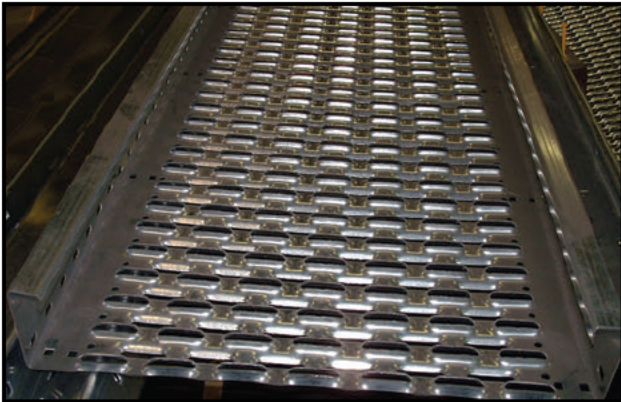
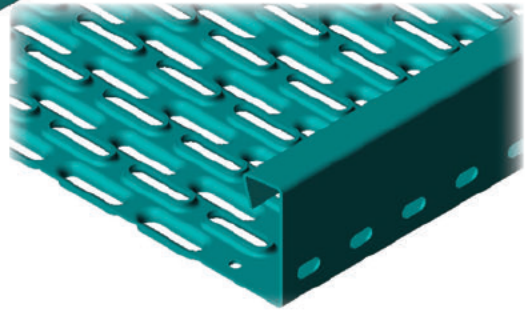
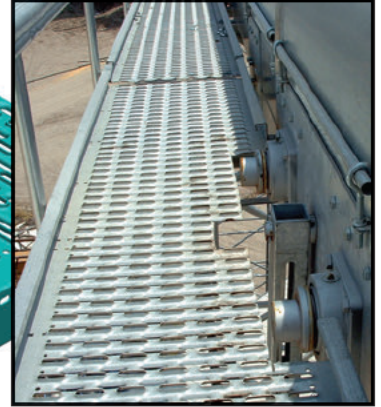
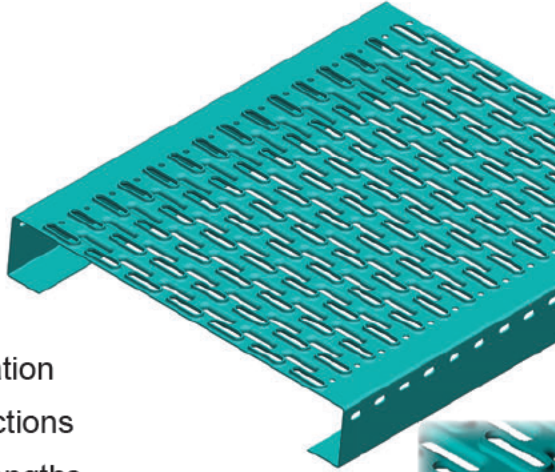


# SILVER GRIP®

# GRATING

## FEATURES

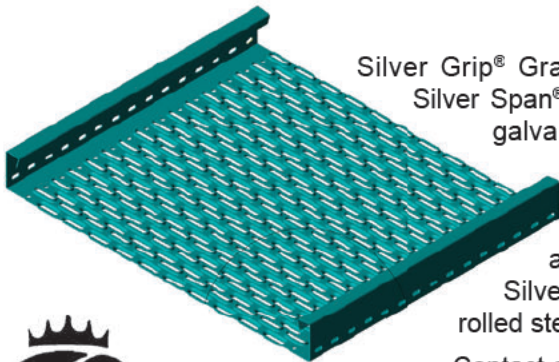
- Rust-resistant, galvanized steel
- Rugged one piece construction
- Slip-resistant, perforated surface
- Variable configuration for flexibility
- No welding required - easy installation
- Precision side holes for bolting sections
- 12 gauge — 10' and 20' in-stock lengths
- Custom lengths & configurations upon request



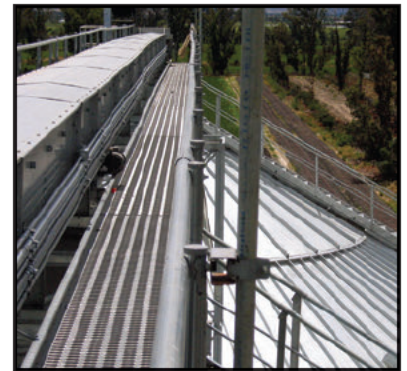
Starting with galvanized steel for rust resistance, no painting or maintenance is required.

Next, add large area surface perforations which “grip” tightly to prevent foot slippage. Reverse perforation provides natural drainage of water or melting snow.

Flat sheets are precision punched with holes along each longitudinal side for bolting modular sections. Depending upon the application, these punched sides may be formed to an angular or channel configuration, thus adding rigidity as a structural member. With the formed angle sides, you have a built-in toeboard. Hardware packages are available with handrail and connector splice plates.



Silver Grip® Grating is incorporated as a part of the Silver Span® support systems. Silver Span® tubular galvanized trussing provides horizontal and inclined combination of walkway and support for conveyors, piping, conduits, etc. Separate bulletins are available on Silver Span® support systems. Silver Grip® grating is also available in hot rolled steel and aluminum.



Contact our sales or engineering departments for further details and assistance.

**SWEET**®  
MANUFACTURING COMPANY

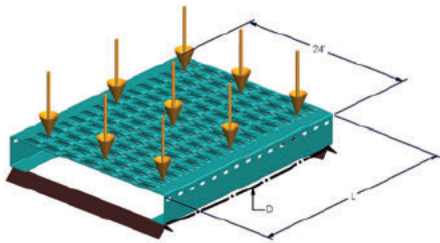
Springfield, OH 45505  
Tel. 937-325-1511 / Fax: 937-322-1963 • US & CAN.: 1-800-334-7254  
Website: [www.sweetmfg.com](http://www.sweetmfg.com) • E-mail: [sales@sweetmfg.com](mailto:sales@sweetmfg.com)

Span (ft.)	Uniform Load Lbs./Sq. Ft.*	Total Load (lbs.)	Deflection (inches)
2	500	2000	0.003
4	350	2800	0.039
6	300	3600	0.168
8	200	3200	0.359
10	100	2000	0.452
12	65	1560	0.629
14	45	1260	0.840
16	35	1120	1.156
18	20	720	1.184
20	10	400	1.127

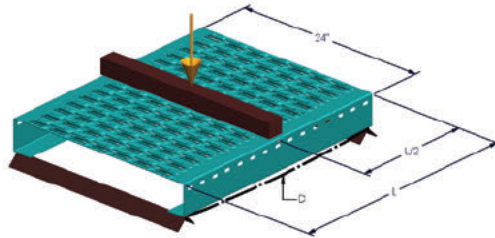
Span (ft.)	Concentrated Load* (lbs.)	Deflection Load (lbs.)
2	1000	0.003
4	1000	0.022
6	1000	0.077
8	1000	0.185
10	850	0.316
12	700	0.468
14	550	0.619
16	375	0.705
18	275	0.838
20	200	0.992

\* Material weight 10 lb. per foot of length, 12 gauge. Based on 24" wide Silver Grip®.

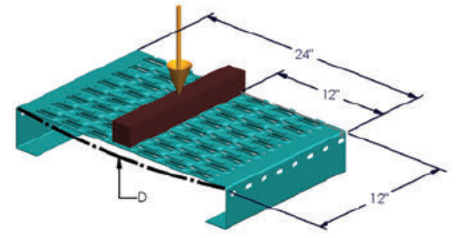
\* When the concentrated load exceeds 475 lbs., it must be applied evenly to both side channels. Material weight 10 lb. per foot of length, 12 gauge. Based on 24" wide Silver Grip®.



Uniform Loading of Weight (Lbs./Ft.<sup>2</sup>)



Concentrated Loading of Weight (Lbs.)



Deflection (D) is .56 inches with 500 lb. load

## GRATING CONFIGURATIONS

