

Flite-Veyor[®]

Incline Flat Bottom Drag Conveyors • 17 Series

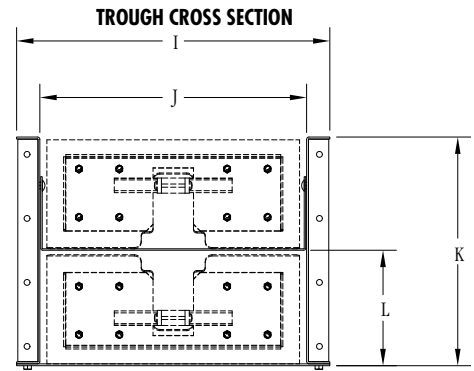
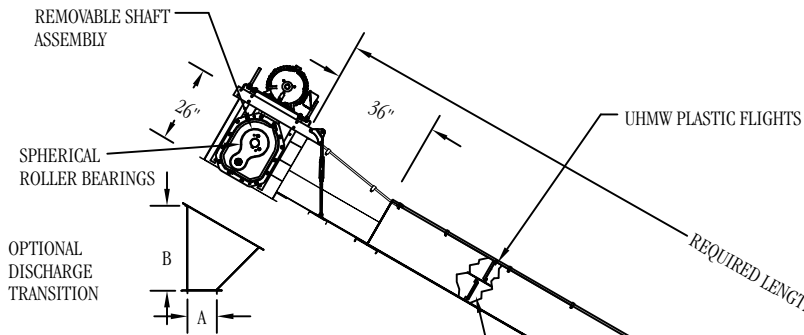


Made in the USA

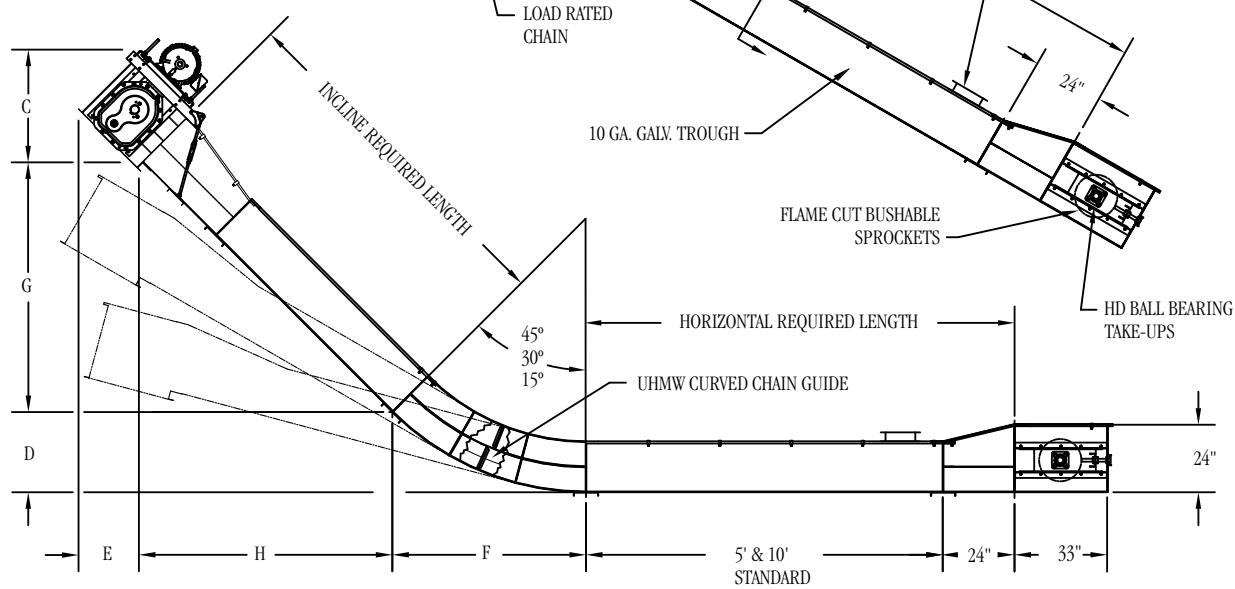


 **SWEET**[®]

STRAIGHT INCLINE



CURVED INCLINE



DIMENSIONS

	MODEL					
	1017	1417	1817	2017	2417	
A	10"	14"	18"	20"	24"	
B (15°)	24"	19"	19"	19"	20"	
B (30°)	29"	22"	20"	20"	21"	
B (45°)	30"	29"	27"	27"	27"	
C	Standard Head		Extended Head			
	15°	30°	45°	15°	30°	45°
	32"	40.5"	44"	40"	46.5"	50"
D	3"	12.5"	27"	34"	28.5"	21.5"
E	27"	31"	25.5"	27"	31"	25.5"
F	24"	46"	65"	24"	46"	65"
G (Per 10')	31"	60"	85"	31"	60"	85"
H (Per 10')	116"	104"	85"	116"	104"	85"

	TROUGH CROSS SECTION				
	1017	1417	1817	2017	2417
I	13.5"	17.5"	21.5"	23.5"	27.5"
J	10"	14"	18"	20"	24"
K	17"	17"	17"	17"	17"
L	8.5"	8.5"	8.5"	8.5"	8.5"

Note: Dimensions (to the nearest 1/2 inch) are for reference only and may be subject to change.

INCLINE *Flite-Veyor* CAPACITY CHART

Bushels/Hour (Metric Tons/ Hour)	MODEL									
	1017		1417		1817		2017		2417	
	FPM	MPS	FPM	MPS	FPM	MPS	FPM	MPS	FPM	MPS
2,000 (50)	80	0.40								
3,000 (76)	117	0.59	84	0.43						
4,000 (102)	156	0.79	112	0.57	87	0.44				
5,000 (127)			139	0.71	108	0.55	98	0.50		
6,000 (152)			167	0.85	130	0.66	117	0.59	100	0.51
7,000 (178)					152	0.77	137	0.70	116	0.59
8,000 (203)					173	0.88	156	0.79	133	0.68
9,000 (228)							175	0.89	149	0.76
10,000 (253)									166	0.84

FPM= Feet per minute MPS= Meters per second

GAUGES & SPECIFICATIONS

HEAD	3/16 ga.
TAIL	10 ga.
TROUGH	10 ga.
COVER	14 ga.
CHAINS	D88K, D88C, D308C

Abrasion resistant liners available for trough sides and bottoms. Gauge options include 10 ga., 3/16" and 1/4".

THE Flite-Veyor® DIFFERENCE

The Flite-Veyor® line of incline flat bottom drag conveyors offers five models with capacities ranging up to 10,000 bph/253 mtp. We offer both straight and curved inclines available at 15, 30 or 45 degree angles. Our range and flexibility can help meet the unique demands of your application – size, speed, throughput and overall processing capacity. The Flite-Veyor® line features:

- Complete galvanized construction, including hot-dip galvanizing of all structural steel.
- Head assembly pillow block bearing bases mounted in the optimum position, perpendicular to the load.
- Design specifications listed with a standard Class II drive package.
- Zinc plated tie rods, nickel plated bushings and hot-dip galvanized motor mounts standard with all drive packages.

OPTIONS

EXTRA STANDARD INLET

Standard angle flange inlets are recommended for use on applications where material flow is controlled before entering the conveyor.

BYPASS INLET

Bypass inlet funnels grain directly into the lower portion of the trough. This method of feeding provides automatic flow control into the conveyor, preventing pressure buildup on the chain. The bypass inlet is recommended where flow control is not provided before entering the conveyor.

DUMP HOPPER

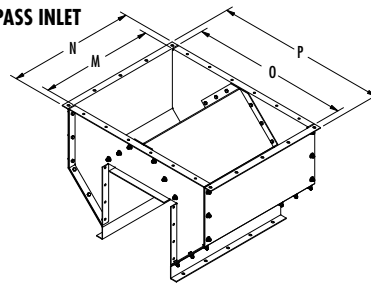
Dump hoppers replace a section of the trough for use in pit applications. The hopper diverts material around the return chain and provides an even flow into the lower portion of the Flite-Veyor®. This prevents pressure buildup on the chain and reduces horsepower requirements. The dump hopper is available in different lengths.

INTERMEDIATE DISCHARGE

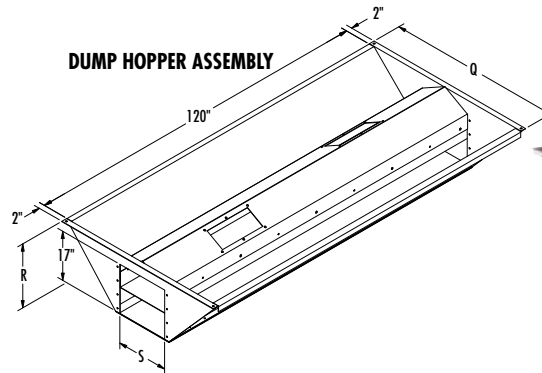
Intermediate discharges have a 36" (91.44 cm) opening. Steel cross members support the chain over the opening while allowing 100% of the material to discharge.

The intermediate discharge has a side opening or inline slide gate with manual, rack and pinion, electric, or pneumatic controls available. An optional discharge transition tapers the 36" (91.44 cm) long opening down to an opening that is 18" (45.72 cm) long.

BYPASS INLET



DUMP HOPPER ASSEMBLY



DIMENSIONS

Model Number	Standard		Bypass Inlet				Dump Hopper		
	M	N	Extended M	Extended N	O	P	Q	R	S
1017	18"	21.5"	26"	29.5"	22"	25.5"	52"	22"	10"
1417	18"	21.5"	26"	29.5"	26"	29.5"	56"	22"	14"
1817	18"	21.5"	26"	29.5"	30"	33.5"	60"	22"	18"
2017	18"	21.5"	26"	29.5"	32"	35.5"	72"	27"	20"
2417	18"	21.5"	26"	29.5"	42"	45.5"	79"	26"	24"

Other lengths available upon request. Contact sales for price and availability
 Note: Dimensions (to the nearest 1/2 inch) are for reference only and may be subject to change.

INTERMEDIATE DISCHARGE GATE WITH OPTIONAL TRANSITION



HINGED PRESSURE RELIEF DOOR



Flite-Veyor® Incline Flat Bottom Drag Conveyors



OTHER CONVEYORS AVAILABLE FROM SWEET:

Flite-Veyor® Horizontal Flat Bottom Drag Conveyors, Flite-Veyor® Round Bottom Drag Conveyors, Formed Channel Belt Conveyors and Quick-Key® Spool Belt Conveyors.



Telephone: 937-325-1511
 Fax: 937-322-1963
 Toll Free: 1-800-334-7254
 Website: www.sweetmfg.com
 E-mail: sales@sweetmfg.com



MEMBER OF

