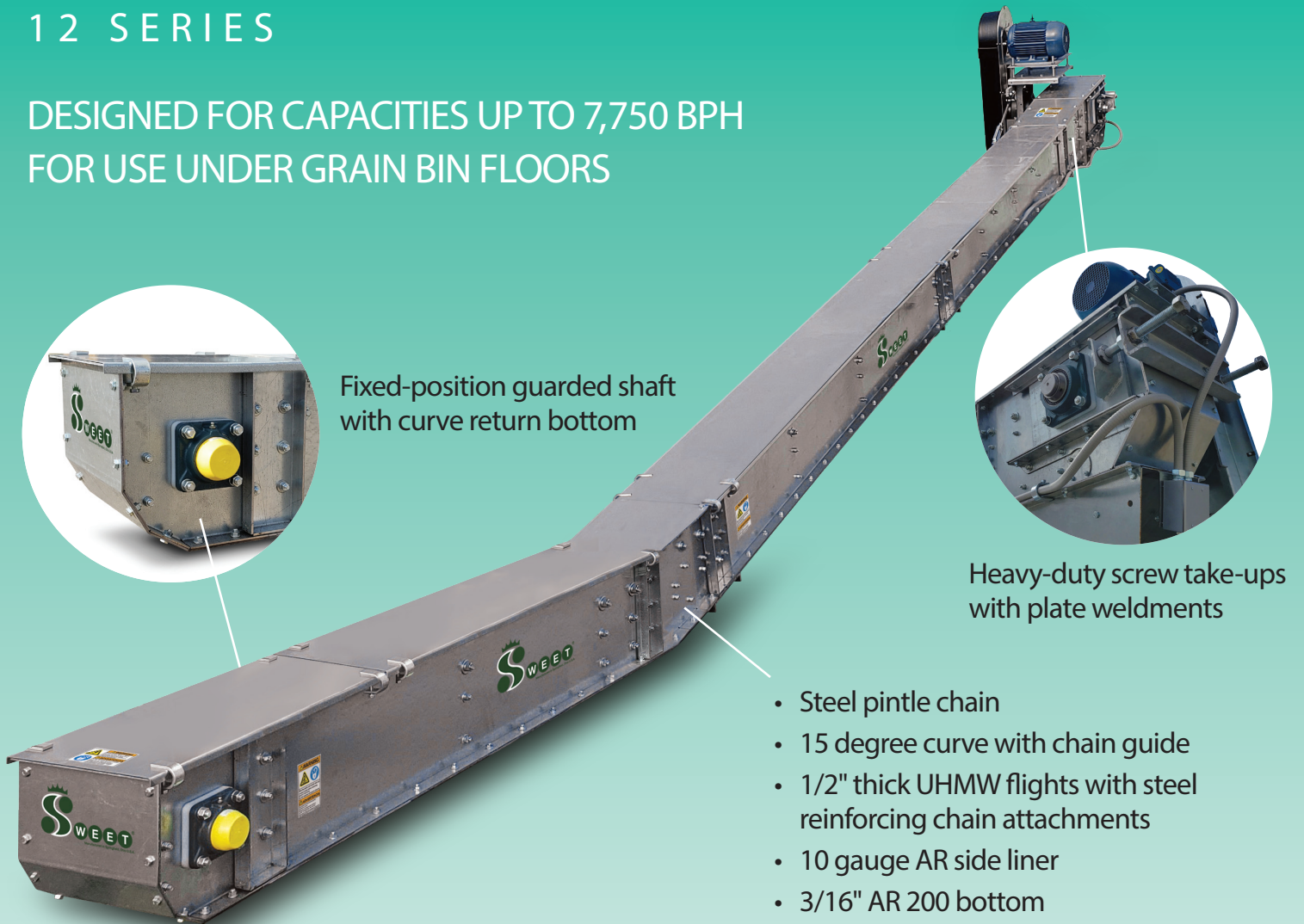


Flite-Veyor®

LOW PROFILE DRAG CONVEYORS

12 SERIES

DESIGNED FOR CAPACITIES UP TO 7,750 BPH
FOR USE UNDER GRAIN BIN FLOORS



Fixed-position guarded shaft
with curve return bottom



Heavy-duty screw take-ups
with plate weldments

- Steel pintle chain
- 15 degree curve with chain guide
- 1/2" thick UHMW flights with steel reinforcing chain attachments
- 10 gauge AR side liner
- 3/16" AR 200 bottom

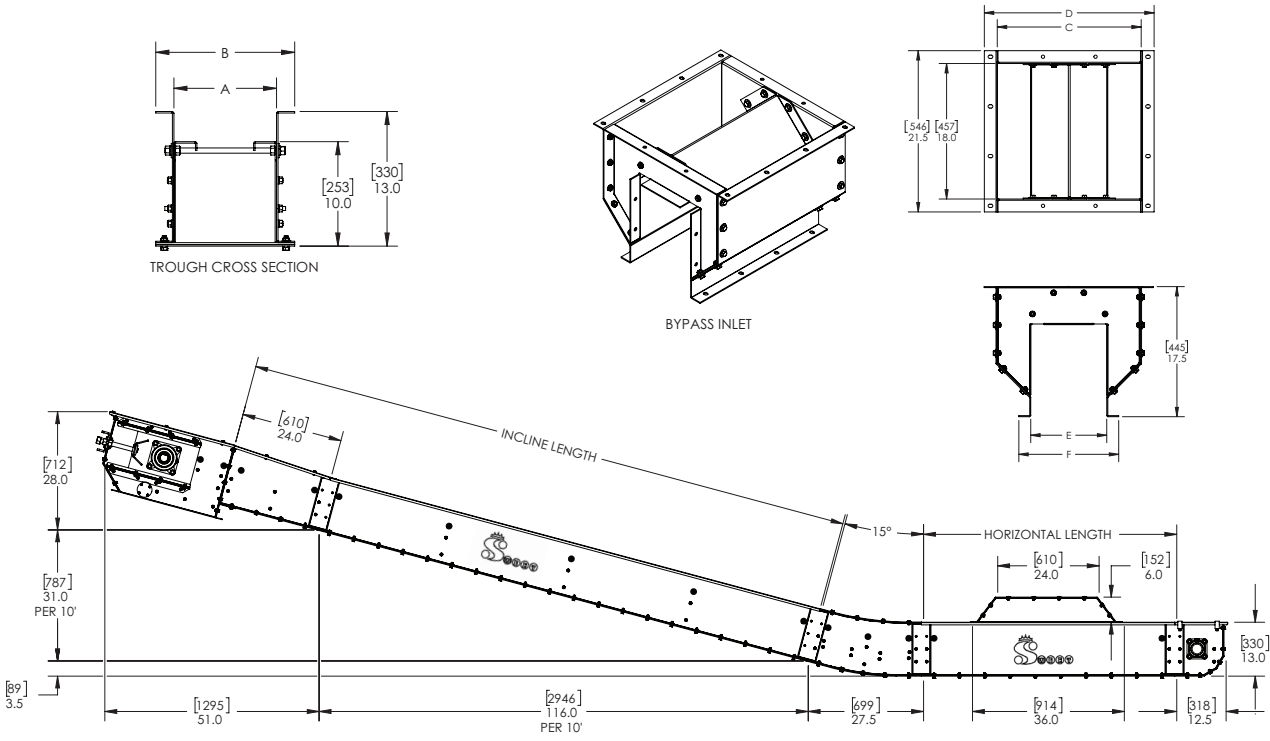
- Standard machined UHMW shaft lip seals
- Heavy-duty 10 gauge galvanized steel construction
- Easy installation and maintenance



MADE IN USA



PREMIUM MATERIAL
HANDLING EQUIPMENT
SINCE 1955.



Dimensions

Model	A	B	C	D	E	F
1012	10.0" [254]	13.5" [343]	19.0" [483]	22.5" [572]	10.0" [254]	13.0" [330]
1812	18.0" [457]	21.5" [546]	27.0" [686]	30.5" [775]	18.0" [457]	21.0" [533]

Dimensions to the nearest 1/2". [] denotes dimensions in millimeters.

Capacities

Model	Capacity	BPH	1000	1500	2000	2500	3000	3500	4000	4500
		TPH	30	42	56	70	84	98	113	127
		MTPH	27	38	51	64	77	89	102	115
1012	Chain Speed	FPM	48	72	95	119	142	166	189	-
1812			-	-	-	-	-	87	99	111
Model	Capacity	BPH	5000	5500	6000	6500	7000	7500	7750	
		TPH	141	155	169	183	197	211	218	
		MTPH	128	140	153	166	179	191	198	
1812	Chain Speed	FPM	123	136	148	160	172	184	191	

Based on 48 pcf material.

Options

- Extra standard inlets • Bypass inlets • Intermediate discharge gates • Dump hopper
- Plugged discharge sensor • Discharge transition • Bearing end covers



Telephone: +1 937.325.1511
 Website: www.sweetmfg.com
 E-mail: sales@sweetmfg.com
 2000 E. Leffel Ln. | Springfield, OH 45505

